



The School Places Challenge 2019

Contents

Executive summary	4
The UK's school places challenge	6
England's challenge	8
Local authorities feel the school places squeeze	10
Spotlight on Birmingham	12
Spotlight on London	14
Scotland's challenge	16
Wales' challenge	18
Northern Ireland's challenge	20
Case study: North Uist	22
Case study: Kineton High School Science Faculty	24
Our recommendations	28
Summary from Scape Group chief executive	30
Comments from the industry	32
Methodology	34
About Scape Group	35

“Good schools are
the bedrock of our
society, and there can
be no room for error”

Mark Robinson,
Scape Group chief executive



Executive summary

This report provides an up to date assessment of the school places challenge across the United Kingdom. This is the fourth edition of this analysis from Scape Group.

This year, we analysed publicly available primary and secondary school pupil projection numbers¹ to identify how many additional schools and classrooms would be needed across the UK, to allow enough school places to be created to meet the growing population of school-age children.

Our findings show that, despite efforts to increase school building over recent years, local authorities still face an uphill battle. The stark reality is that the number of children needing a school place will continue to increase across the whole of the UK. **England will have 385,031 more pupils by 2021/22**, with **Scotland, Northern Ireland and Wales** expecting to have an **additional 33,179 pupils between them by 2020/21**.

At the same time, despite ex-Chancellor George Osborne ring-fencing funding for schools, **funding for the education sector has declined by 4.6 per cent between 2015 and 2020²**. Existing schools are feeling the pressure. Some Multi-Academy Trusts have issued warnings, as funding fails to keep pace with costs and inflation, and thousands of children now face a 4.5 day week as some schools close their doors early to save money³.

Against the backdrop of Brexit, school funding has slipped down the agenda. Building new schools must be a top priority for the government, and greater efforts should be made to unlock finance which can enable local authorities to deliver new schools and classrooms to meet demand in time.

However, with **640 new schools needed across the UK** over the next couple of years to meet current projections, government, local authorities and developers need to make a concerted effort to work innovatively and collaboratively. If a step change does not take place quickly, the effect on education standards and the wider economy will be felt for generations to come.

385,031

more pupils in England by 2021/22

33,179

more pupils in Scotland, Northern Ireland and Wales by 2020/21

↓4.6%

decline in funding for the education sector between 2015 and 2020



Mark Robinson

Scape Group chief executive:



“As with many critical issues that desperately need political attention, education has dropped down the agenda as government bodies focus on Brexit and our future position with the rest of the world.

Every part of the UK needs to build more schools, and local authorities nationwide will be feeling the strain.

We must collectively focus on delivering a strategy and solutions which not only provide high-quality, modern spaces for teaching and learning but also offer our colleagues in local authorities cost certainty, value for money and timely delivery.

Technologies such as offsite construction will play an essential part in that.

In March, record numbers of children missed out on their first choice of secondary school⁴, and appeals against secondary school offers have doubled in six years. This issue is likely to be exacerbated in the coming years if we do not think and act more creatively now. Good schools are the bedrock of our society, and there can be no room for error.”

¹Please see methodology

²Time for Change – the end of austerity, Trades Union Congress, March 2018

³School announces plan to close at lunchtime every Friday to save money, The Telegraph, June 2017

⁴National Offer Day: Record numbers to miss out on first choice for secondary school places, The Telegraph, Victoria Ward, March 2019

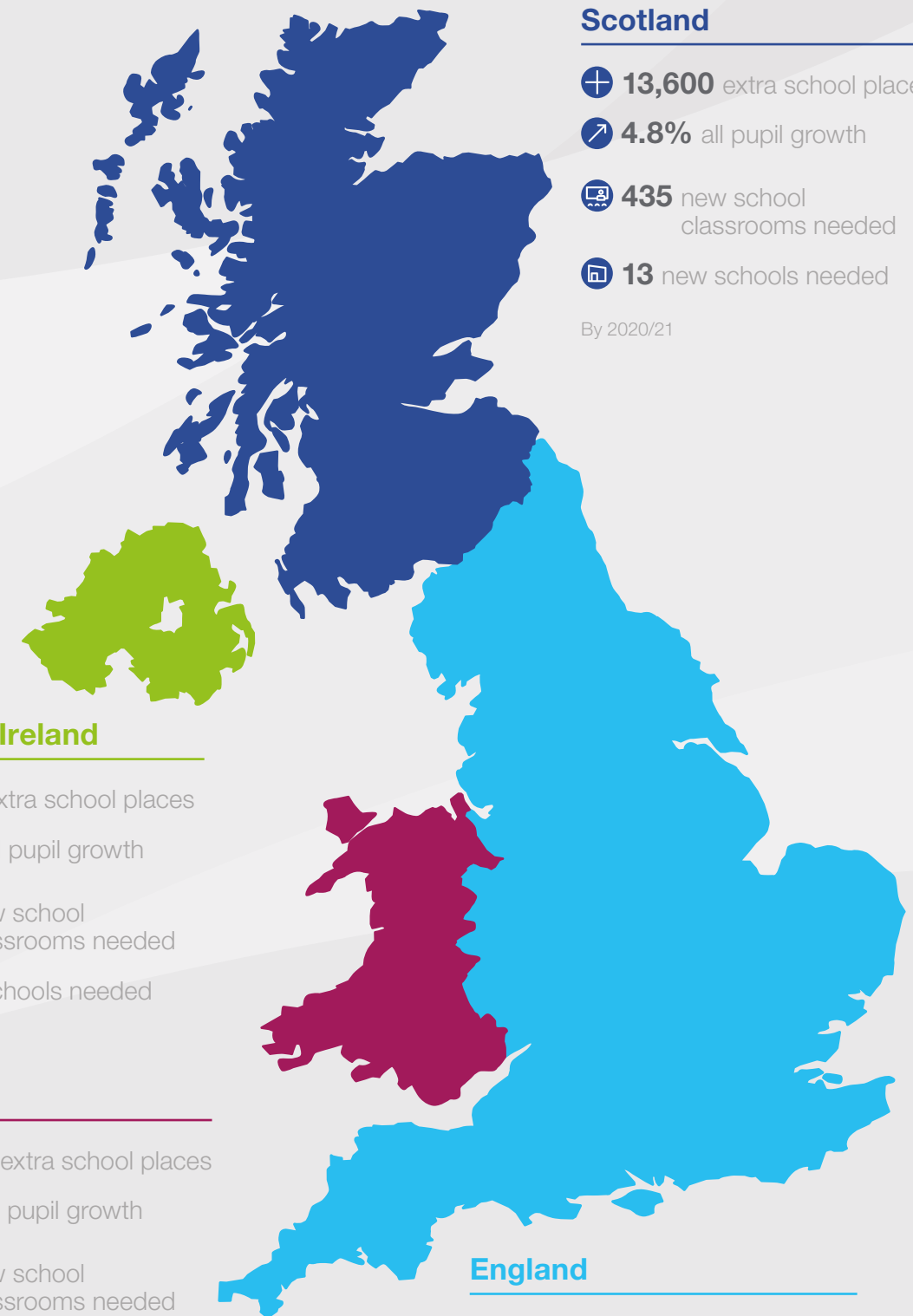
The UK's school places challenge

The UK faces a major task when it comes to making sure there are enough school places to meet the growing demand.

Although the bulk of the demand for additional school places comes from England, for both primary and secondary schools, the issue affects the whole of the UK.

Education represents the second largest element of public service spending in the UK behind health and is equivalent to around 4.3 per cent of national income. The level of UK education spending has risen significantly in real terms during the 21st century, growing particularly fast from the late 1990s through to the late 2000s, before falling from 2010 onwards⁵.

Local authorities across the UK are acutely aware of the challenge that they face. But in an age of continued austerity – faced with inflation and rising costs beyond their control – local authorities' ability to deliver more with less is close to breaking point.



England's challenge

England faces a significant challenge as the school-age population is set to increase by 5.5 per cent over the next two years. There will be 385,031 more school-age pupils in the UK by 2021/22, which equates to 12,835 additional primary and secondary school classrooms, the equivalent of 640 new schools.

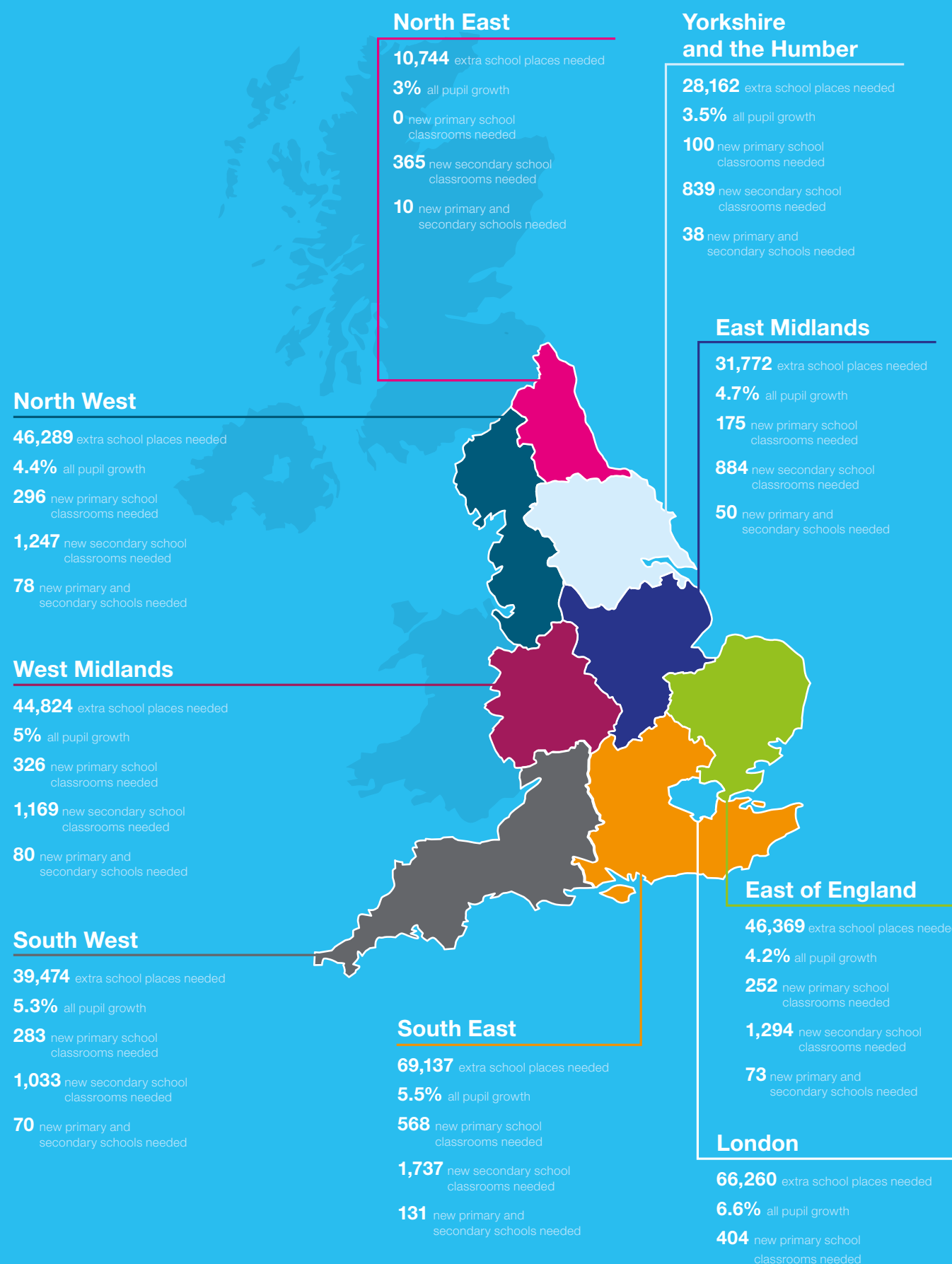
But the shift in demand has changed. Local authorities have made great strides in increasing the number of primary schools over the last couple of years, mainly by making sure that developers build new schools through Section 106 agreements. When Scape conducted this research in 2016, the UK was experiencing annual growth of 2.4 per cent. The expected number of additional primary school pupils has slowed to 0.8 per cent growth per year, with 342 new primary schools required by 2021/22.

However, as these children progress from primary to secondary education, we must now turn our attention to building new secondary schools. There will be **313,164 additional secondary school pupils** looking for places in the next two years, then there are today. This is an **increase of over 9 per cent** on the current number. To meet demand, local authorities will have to build **10,439 new classrooms** or **298 new secondary schools**.

However, to deliver extra school places in the necessary timeframe, local authorities must be given a toolkit to succeed. Crucially, additional funding, support and resources are needed.

 **5.5%**
increase in school-age population in next two years

 **640**
new primary and secondary schools required in England by 2021/22



The growth in both primary and secondary pupil numbers across the country is high, but the projected increase will be felt more strongly in some regions than in others.

Although all regions will experience an increase in pupil growth above 3 per cent over the next two years, **London**, the **South East** and the **South West** can all expect to see the largest increases. Local authorities in the South East will have to build the most primary school classrooms (568), but local authorities in London will have to build the most secondary school classrooms (1,872). Overall, London needs to build the equivalent of 89 schools.

The number of primary school classrooms needed in each region has reduced since our last report in 2017, but every region (except for the North East) will still have to build more than 100 primary schools in the next two years to accommodate projected pupil increases. The secondary school crisis, however, is much starker, with every local authority in England facing a very real challenge. On average, each region in England will need to build 1,100 new secondary school classrooms to meet the projected demand.

Increased devolution of power to English regions and cities could offer a huge opportunity to introduce greater local influence in the way school estates are managed. Unlike Scotland, Wales and Northern Ireland, England has a centralised system and the decision about how much education funding local authorities receive is made directly by the government. Greater consultation between local authorities and central government about the allocation of funding to meet local demand is crucial in making sure the right amount of school places are created.

Local authorities are feeling the squeeze

Local authorities hold the unique responsibility of providing enough school places for residents. No other body in England shares this duty. At a local level, faced with an impending boom in pupil numbers, many local authorities are feeling significant pressure.

Birmingham City Council is faced with the most substantial projected increase, with **Manchester City Council** coming in a close second. Both cities can expect more than **12,000 extra secondary school pupils by 2021/22**. Between them, they will need to build the equivalent of **53 new schools by 2021/22**.

It is not just densely populated cities which are affected. London's commuter belt is also experiencing a significant strain. Essex, Kent, Surrey and Hertfordshire all rank within the top ten areas which will be most impacted by the growth of the school-age population.

Even though councils are legally responsible for making sure that the demand for school places is met, the process for establishing and funding schools is often outside councils' control. Local authorities have no direct control of free schools, grammar schools or academy places, despite the fact these types of schools make up the bulk of the current government's school places strategy.



new schools required in Birmingham and Manchester by 2021/22



extra secondary school pupils in Birmingham and Manchester by 2021/22



Some local authorities believe that the government is delivering free schools in areas where demand is lower, while other areas face crippling shortages⁶. Taxpayers' money could be better-used refurbishing and extending existing schools in order to meet demand in the right places.

While central government is making funding available for building free schools⁷, local authorities are reporting a shortfall in their own education funding and schools' spending per capita has fallen by eight per cent since 2010. The Local Government Association recently reported that some local authorities are even borrowing tens of millions of pounds to make sure their children have places in permanent school buildings⁸.

On the other hand, a number of local authorities will see very limited school-age population growth, and for some, the number of primary and secondary school pupils under their jurisdiction will actually decline. As we have seen in previous years, remote locations such as the Isles of Scilly, Isle of Wight and Cumbria all fall within the top ten local authorities with enough school places to meet current demand.

English local authority	Number of extra school places required by 2021/22	All pupil growth % by 2021/22	New primary school classrooms required by 2021/22	New secondary school classrooms required by 2021/22	New primary and secondary schools required by 2021/22
Isle of Wight	-309	-1.9	-14	3	0
Haringey	-155	-0.4	-31	25	1
Blackburn with Darwen	-109	-0.4	-20	17	0
Cumbria	-64	-0.1	-29	26	1
Isles of Scilly	8	3.4	0	0	0
Bury	31	0.1	-17	18	1
Hartlepool	59	0.4	-10	12	0
Darlington	105	0.7	-10	13	0
Kensington and Chelsea	132	1.1	-10	15	0
Brighton and Hove	137	0.4	-34	39	0

If local authorities could play a greater role in judging and approving free school proposals, they could ensure that new schools are established where there is the greatest need, in a way that supports local population growth.

⁶The council role in school place planning, Local Government Association, March 2014
⁷Government spending billions on free schools while existing schools crumble, The Guardian, Rajeev Syal, February 2017
⁸The council role in school place planning, Local Government Association, March 2014

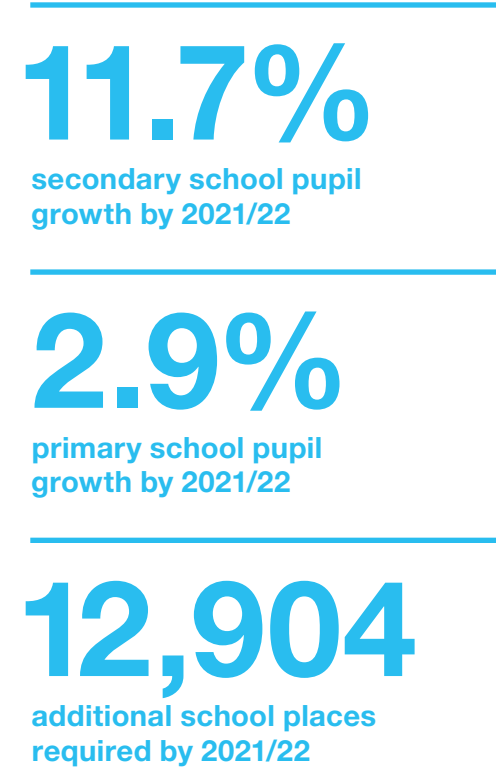
Spotlight on Birmingham

Birmingham City Council will see the largest increase in pupils by 2021/22. They will need to build 111 new primary school classrooms, 319 new secondary school classrooms, or a total of 25 new schools to meet demand from the additional 12,904 school-age children expected to be living in Birmingham.

Birmingham is the second largest city in the country by population, with over 1.1m residents, 23 per cent of whom are children. In the coming years, thousands of primary and secondary school pupils are likely to be affected by the shortfall of places, as the city struggles to keep pace with demand.

In a bid to tackle the current demand for additional school places, as of March 2018, **Birmingham City Council plans to deliver 1,035 new school places by the next academic year (2020/21)**. In addition to this, school building in Birmingham is being bolstered by plans to build facilities for the upcoming Commonwealth Games, which is being held in the city in 2022. Alongside the desire to transform the Athlete's Village into 1,400 homes after the games, contractor Lendlease will also be building a new secondary school for 1,260 pupils, which is due to open in 2021.

Birmingham also benefits from being part of the West Midlands Combined Authority. This offers significant opportunity for a more collaborative approach to school building across all local authorities that make up the combined authority. Devolving further powers and allocating fairer funding to the combined authority could help make sure there are enough school places across the whole region.



Birmingham City Council	Number of extra school places required by 2021/22	All pupil growth % by 2021/22	New school classrooms required by 2021/22	New schools needed by 2021/22
Primary schools	3,342	2.9%	111	16
Secondary schools	9,562	11.7%	319	9
All school-age pupils	12,904	6.5%	430	25



In the coming years, thousands of primary and secondary school pupils are likely to be affected by the shortfall of places, as the city struggles to keep pace with demand.

Spotlight on London

The pressure on school places in the capital has been a long-standing issue for the city’s residents, and parents are finding it increasingly difficult to get their children into their first, second or even third choice of school. In March 2019, a record 33,000 children missed out on their first choice of secondary school in London⁹.

Overall, London will have an **extra 68,260 primary and secondary school pupils** in the next two years, a 6.6 per cent increase on the current number. This breaks down to **7,550 new primary school** children and **56,149 new secondary school** children. Secondary schools in particular will feel the strain as they try to cope with increasing pupil numbers.

The London Borough of Havering will face the biggest challenge, with pupil numbers due to increase 11.3 per cent by 2021/22. This equates to the need for 93 new primary school classrooms and 59 new secondary school classrooms by 2021/22, or 15 extra schools.

On the other hand, the London Borough of Haringey will experience the smallest rate of growth of all London’s boroughs. In fact, it is projected that there will be 155 fewer school-age pupils living in the borough in two years’ time. This breaks down to a 4.3 per cent fall in primary school pupils (962 fewer), but a 5.4 per cent increase in secondary school pupils (712 extra). On balance, this means that only one new school will need to be built.

The London boroughs of Kensington and Chelsea, Lambeth, Merton and Islington are among the top places to live for the availability of school places in the capital. If they do have to build any new schools, this would only be one in each borough.



33,000

children missed out on their first choice of secondary school in London during this March 2019’s intake

London boroughs facing the biggest challenge

	Havering	Barking and Dagenham	Greenwich	Newham	Redbridge
Extra school places needed	4,564	4,943	3,968	4,727	4,035
All pupil growth	11.3%	11.1%	9.6%	7.9%	7.2%
New primary school classrooms needed	93	56	40	54	50
New secondary school classrooms	59	109	92	103	85
New primary and secondary schools	15	11	8	11	10



London boroughs facing the smallest challenge

	Haringey	Kensington and Chelsea	Lambeth	Merton	Islington
Extra school places needed	-155	132	311	413	498
All pupil growth	0%	1%	1%	2%	2%
New primary school classrooms needed	0	0	0	0	0
New secondary school classrooms needed	25	15	48	29	19
New primary and secondary schools needed	1	0	1	1	0

By 2021/22

Scotland's challenge

The number of primary school pupils entering the education system in Scotland is set to fall. With 19,700 fewer primary school pupils by 2020/21, there is no requirement for new primary schools.

However, the primary school pupils that entered into the system five years ago are due to progress to secondary school in the next couple of years, putting pressure on S1 (the equivalent of KS3 in the English education system) across the country. By 2020/21 there will be an additional **13,600 secondary school pupils**, a **4.8 per cent increase** on current numbers, which will require the equivalent of 453 extra classrooms or an additional 13 schools to accommodate them.

Aberdeen City Council will experience the biggest increase in secondary school pupils in the next two years – with an additional 1,400 pupils (a 17.5 per cent increase), equating to the need for an additional 47 classrooms.

Edinburgh City Council also needs an additional 47 classrooms as pupil numbers will climb by 7.5 per cent by 2020/21. The council has agreed on a £1bn package of spending as part of a four-year Change Strategy. This includes a £66.7m investment in new or refurbished primary or secondary schools to help meet current need.

Education and training in Scotland are devolved to Scottish Parliament, with Holyrood providing funding to local authorities across the country. The Scottish government's Schools for the Future programme, which began in 2009, is investing more than £1bn into the delivery of 117 new schools to help meet the growing demand for secondary school places in Scotland.



13,600

additional secondary school pupils in Scotland by 2020/21



17.5%

increase in secondary school pupils for Aberdeen City Council in the next two years

The Scottish government's Schools for Future programme, which began in 2009, is investing more than £1bn into the delivery of 117 new schools to help meet the growing demand for secondary school places in Scotland.

Wales' challenge

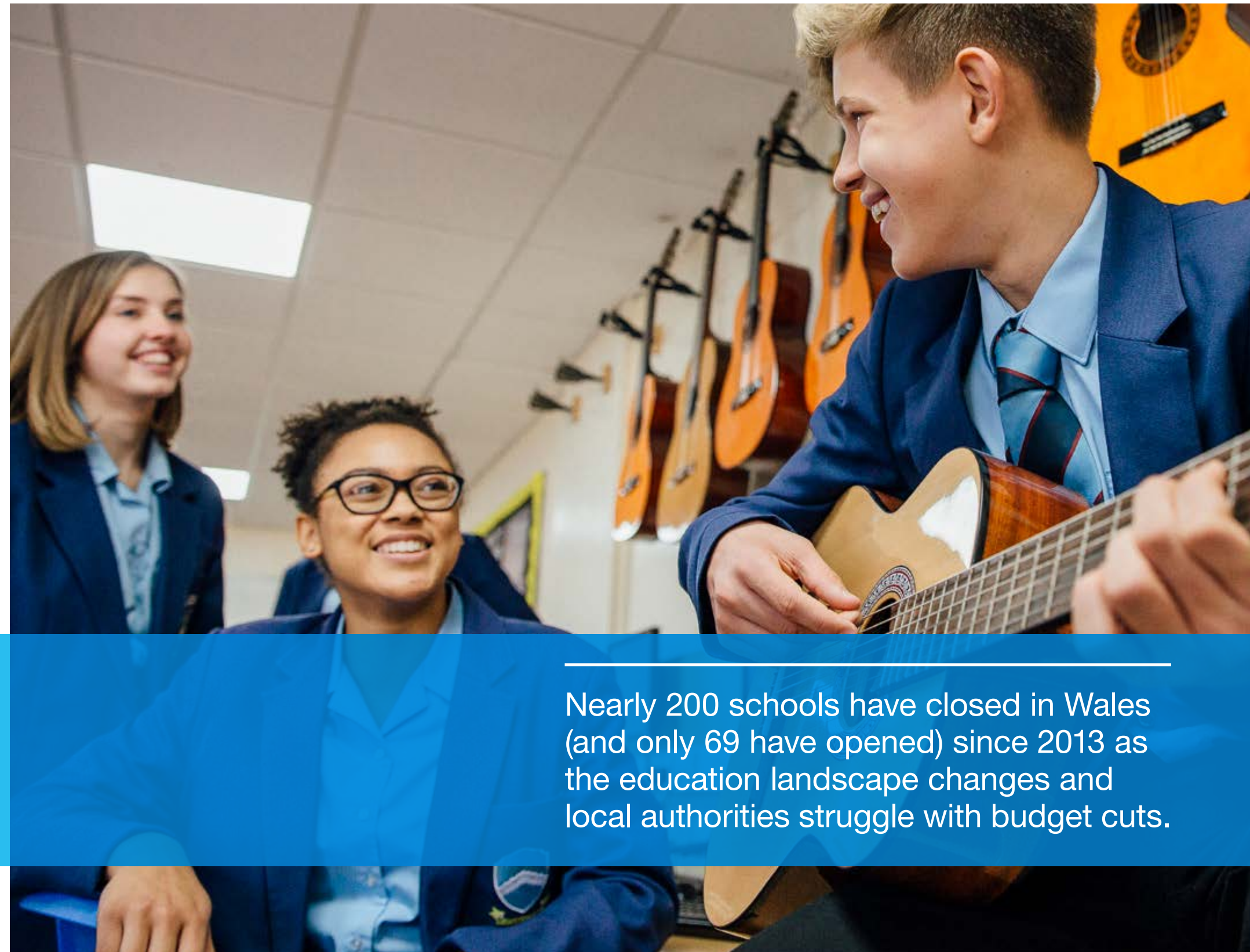
Wales is not expected to experience any growth in primary school pupils in the next year, so the projections suggest no new primary schools are needed.


However, the country will see **12,248 more pupils enter the secondary school system by 2020/21**. This represents an **eight per cent increase** on the current number of pupils attending secondary school and will place a huge strain on education providers. To alleviate this problem, **408 secondary school classrooms**, or **12 new secondary schools** will need to be built.

As well as fighting with a growing secondary school population, Wales is also battling school closures. Nearly **200 schools have closed in Wales** (and only 69 have opened) since 2013 as the education landscape changes and local authorities struggle with budget cuts. All but two of Wales' 22 local authorities – Swansea and Newport – have closed schools in the past five years. Although it is currently projected that Wales will need 12 new schools, if schools continue to close, this figure could become much higher.

Meanwhile, new schools and improvements to existing school buildings are being financed through the 21st Century Schools Programme, an initiative that is jointly funded by the Welsh government and local authorities. This is a long-term strategy for Wales' educational estate. The second phase of investment announced in 2017 dedicated **£2.3bn to rebuilding or updating more than 100 schools and college buildings** which are deemed to be reaching the 'end of their life'.

Despite the Welsh Government actively encouraging local authorities to embrace Modern Methods of Construction (MMC), such as offsite techniques, the uptake has been very limited.



 **12,248**
additional secondary school
pupils by 2020/21

Nearly 200 schools have closed in Wales (and only 69 have opened) since 2013 as the education landscape changes and local authorities struggle with budget cuts.

Northern Ireland's challenge

Northern Ireland is also not expecting to experience an increase in its primary school-age pupils, but it is expected to see a 9.4 per cent uplift in the number of secondary school pupils looking for a school place by 2020/21.


This equates to the need for 7,332 school places – the equivalent of 293 new school classrooms or eight new schools.

Meanwhile, current schools are struggling. The cost of maintaining school buildings has skyrocketed and schools in Northern Ireland are set to overspend their budgets by about £33m in 2018/19.

Due to the reduced capital available to the Department of Education in the coming years, we can no longer presume that whenever a new school is needed, one will be built. But it's not all doom and gloom. Northern Ireland's Department of Education announced in May 2018 that up to £60m would be made available to 25 existing schools for much-needed accommodation upgrades. Funding of between £500,000 and £4m is available through the current School Enhancement Programme for projects aimed at refurbishing or extending existing buildings.

While more school places are needed in some areas, one in three rural primary schools do not have enough pupils to be sustainable, and the Department for Education has plans for a number of mergers to improve sustainability within the existing school network. Taking a combined approach which integrates both primary and secondary schools, is one solution for tackling the peaks and troughs in school numbers, especially in rural areas.

Combining primary and secondary schools creates holistic, multi-functional facilities and classroom spaces that can be adapted to meet the demands of different age groups at different times.

 **9.4%**
increase in secondary school pupils by 2020/21

 **£60m**
of funding available for upgrades to 25 existing schools



The cost of maintaining school buildings has skyrocketed and schools in Northern Ireland are set to overspend their budgets by about £33m in 2018/19.

Case study North Uist



Improved education facilities for a close-knit community

Client
Western Isles Council

Project value
£8.6m

Region
Scotland

Framework partner



Requirements

North Uist is an island in the Outer Hebrides, on the north west of Scotland and at the edge of the Atlantic Ocean. With three separate, remote primary schools, Western Isles Council wanted to create a new school, merging all three existing schools on the island into one centralised 100-pupil school with integrated nursery facilities.

Solution

Working collaboratively with the school, Robertson's local Gaelic-speaking site team applied their extensive knowledge of what makes a successful school to create a beautiful, fit-for-purpose building. With its bright, spacious and modern interior design, the new school provides a pleasant, inspiring learning environment for children, staff and visitors.

Outcomes

Despite its remote location, over 73% of the project labour force lived within 20 miles of the site, securing vital jobs for the local island community. Throughout the project, students and staff at the school were encouraged to get involved and we supported the upskilling of the local community through a range of work experience and apprenticeship opportunities.

“As headteacher, I can say that working with Robertson’s staff has been a positive and anxiety free experience for me and for all involved in the life of the school. This has been a job well done!”

Sarah Jane MacSween
Headteacher, North Uist Primary School



Case study

Kineton High School Science Faculty

Striking, beautiful and unusual – a real focal point for the whole school

At Kineton High School, Warwickshire County Council asked Lungfish Architects to replace seven dilapidated mobile classrooms with a specialist science block for the whole school to use. Delivered in partnership with Jeakins Weir and Scape Group, Lungfish designed this project with the school's aspirations in mind - to engage pupils and lay the foundations for future growth.



Requirements

Dramatically improving its educational facilities and attracting new sixth-form students are Kineton High School's top priorities. So, in addition to the new science faculty and in preparation for the school's future growth, Lungfish designed the whole site so that this phase can be easily mirrored, creating even more inspiring learning spaces. The school hopes to add a further eight-classroom building once additional funding is secured.

Solution

Providing seven specialist labs and one multi-use classroom, the new science block is an incredibly practical building – with one big difference. The upper floors have been given iridescent cladding that catches the light and changes colour during the day. As well as including a canopied plaza where students can meet, the designs also allowed for extensive refurbishment to parts of the existing school buildings - converting old labs, improving access and making circulation spaces brighter.

Outcomes

The iconic new science block has become a real talking point for the whole school and community. The most significant development at Kineton High for 40 years, this modern learning environment has given the school state of the art STEM (Science, Maths, Engineering and Technology) facilities, fully supporting the school's aspirations and expectations of learning and achievement in these subjects. Following the project, the school recorded their best science results ever.

Client

Warwickshire County Council

Project value

£3.25m

Completion

August 2017

Architect

LUNGFISH

Framework partner

Jeakins Weir

“At Lungfish, we believe that an education-first approach to designing schools is essential. We all have a responsibility to challenge ourselves for better, more efficient, innovative and smarter schemes. Good engagement, collaboration and ongoing conversations help us to do just that. By understanding the challenges for each client early in the process and maintaining communication throughout, we can collaboratively achieve a successful outcome.”

Richard Daw

Associate director, Lungfish Architects

“It has provided a modern environment for the teaching of science, one of our most successful curriculum areas of the school... The building itself is inspirational, changing colour during the day as the sun moves around the sky.”

Siona Robinson
Headteacher



Our recommendations

1 Offsite construction

The adoption of offsite construction as the main method of building for all new schools and extensions would mean that they are built quicker than by using traditional methods. If modular can grow in scale, building schools will become more efficient and cost-effective.

2 Fairer funding for local authorities

A fairer education funding model for local authorities, which ensures that they can work with central government to set budgets that reflect local need. In particular, local authorities should play a part in judging and approving free school proposals to make sure that new schools are established where they are most needed.

3 Collaboration

Greater collaboration between councils and developers to ensure that secondary schools are built in major urban extensions and developments first, through agreements between developers seeking planning permission and the local planning authority (Section 106 agreements), so that the area is prepared to meet increased demand.



Summary

Mark Robinson

Scape Group chief executive:



"Although the growth of our pupil population has begun to slow down in recent years, we still have a big issue on our hands and the government must treat the UK's school places challenge as a top priority. While the Brexit fallout has created a vast amount of uncertainty, knowing your child will be able to get a local primary or secondary school place should be a constant.

The current government believes free schools are the answer, but I would argue that this standpoint has been born out of ideological stubbornness, rather than a genuine effort to tackle the school places crisis. Deploying government resources to existing school structures instead would enable local authorities to refurbish and extend current schools. Not only would this provide additional school places, but it would be a much more efficient use of taxpayers' money.

England will have 385,031 more pupils by 2021/22, and Scotland, Northern Ireland and Wales can expect to have 33,179 more pupils between them by 2020/21. With demand continuing to grow, it is vital that we focus on solutions that will allow us to create additional school places quickly and resourcefully, without compromising on quality. Offsite technology is one answer.

While the Education and Skills Funding Agency (ESFA) started its push for modular four years ago, only 70 schools have been built using offsite construction so far. Modern Methods of Construction not only allow quick construction but can also cost local authorities significantly less. Until the government takes more pragmatic action, they cannot claim to be safeguarding the futures of the UK's young people.

A cohesive national strategy for the use of modular to build new schools could significantly reduce the amount of time it would take to provide areas with much-needed school places, making sure our school estates are fit for the future."



While the Brexit fallout has created a vast amount of uncertainty, knowing your child will be able to get a local primary or secondary school place should be a constant.

Comments from the industry

Neil Pates

Managing director of strategic frameworks and alliances, Kier



“Rising pupil numbers, as well as budget cuts across the UK have placed significant strain on our schools up and down the country. In these challenging times, we are committed to collaborating with councils in providing the best education possible and ensuring that every child should be educated in outstanding quality teaching and learning spaces.

To achieve this, we have used innovative build methods to create spaces for the next generation to learn across the UK. This includes modern methods of construction (MMC), and offsite construction. For a number of our education projects we have used modular buildings for a range of elements of the build, including the classrooms. This method means that the rooms can be built offsite, while other elements of the build are taking place. This saves time as well as money and allows us to provide vital learning spaces as efficiently as possible.”

We have used innovative build methods to create spaces for the next generation to learn across the UK.

Victoria Brambini

Managing director Perfect Circle



“It’s common sense that investing in future generations is the best policy for safeguarding our economy, yet the reality is that education funding continues to be cut. It’s crucial that the public and private sectors take a collaborative approach to protect the future of our country through the education of our children.

The challenge is for councils to provide cost-effective, high quality schools, often within short timescales, while still meeting full compliance, not compromising on standards of education and demonstrating long-term social value. Perfect Circle continues to provide solutions to the challenge, supporting the drive for better school places as an integral part of Scape Group’s innovative framework procurement.

At Perfect Circle, our design teams embrace the adoption of a ‘kit of parts’ approach utilising repeatable, standardised, offsite manufactured structural and building service components, many of which are pre-assembled. This allows some customisation to accommodate constrained sites, individual teaching pedagogies and space utilisation. Standardisation also permits national supply chains for bulk discounted procurement.

In order to continuously improve, contractors and consultants are constantly looking to drive up cost efficiency through increased collaboration, BIM pre-coordination and project performance feedback to seek out further cost savings and value realisation.”

It’s crucial that the public and private sectors take a collaborative approach to protect the future of our country through the education of our children.

Derek Shewan

Chief executive officer Robertson



“In Scotland we are seeing a significant amount of construction activity across the education sector. Local authorities are putting substantial effort into tackling the school places challenge, one that we are committed to supporting them with.

As this report states, local authorities will benefit significantly by engaging with organisations such as Scape to find a faster route to market. That has been the case in Tayside, where the client worked with Scape on the delivery of North East Campus and Coldside Campus – two state-of-the-art facilities built by Robertson which will truly stand the test of time. Collaboration of this type is hugely effective, with a joined-up approach required if we are to ensure a brighter future for school pupils.”

Collaboration of this type is hugely effective, with a joined-up approach required if we are to ensure a brighter future for school pupils.

Leanne Day

National framework manager Willmott Dixon



“Willmott Dixon feels it has a huge responsibility when it comes to supporting children and families on a national level to provide not only suitable education environments but excellent learning establishments for the future generations in England, Ireland and Scotland. It is in our interests to ensure that they receive the best education available in the best built environment possible.

We have made a commitment to Scape Group and our partners across the UK to work with local authorities to provide the most suitable options of buildings sustainably available. Understanding the pressure on budgets, we believe that by using modern methods of construction we can provide what schools and communities are looking for; be it brand new school designs or expansion of existing school buildings. Willmott Dixon will work with local authorities exploring the best solution and by doing this we will be able to work to eradicate the growing epidemic regarding the lack of school spaces for our children. We need to act now.”

We will be able to work to eradicate the growing epidemic regarding the lack of school spaces for our children. We need to act now.

Methodology

Data for the England-based research was obtained through the Department for Education's 2018 School Capacity and forecast tables statistics, available through GOV.UK.

Data for the Scotland-based research was obtained through The Scottish Government's website; Local authority level pupil projections: primary and secondary school pupil numbers by local authority; 2015 to 2021.

Data for the Welsh-based research was obtained through Stat Wales, Pupil Projections, available through the Welsh Government's website.

Data for the Northern Ireland-based research was obtained through Department of Education's Schools and pupils by District Council 2017/18 and School population – projections (2017/18 version) statistics.

The number of extra classrooms and schools predicted in this research is based on there being 30 pupils in both a primary and secondary class, seven classrooms in a one-form entry (1FE) primary school and 35 classrooms in a secondary school. This equates to a total of 210 pupils per primary school and 1,050 pupils per secondary school. This data does not take into account current capacity in individual schools or current school building plans in individual areas.

About Scape Group

Scape Group is a public sector organisation, dedicated to creating ongoing efficiency and social value via the built environment. Scape and its subsidiaries offer fully managed frameworks, property services, innovative design solutions, community investment opportunities and joint ventures.

By bringing together the strongest teams from the public and private sectors, Scape's rapidly deployed, highly measurable and collaborative approach delivers value for money and quality buildings while stimulating local economic growth and community enrichment. Scape operates with a buying capacity of £13bn and has helped to deliver over 12,000 public sector projects with more than 1,800 currently in progress. For the past three years, Scape Group was named the 'Best Client to Work With' at the annual Construction Enquirer Awards.

£13bn

buying capacity

12,000

public sector projects delivered

1,800

live commissions



For more information visit:
scapegroup.co.uk

For press enquiries, please contact:
Instinctif Partners: 0207 457 2020

Laura Taylor
laura.taylor@instinctif.com
0207 866 7854

Emma Marshall
emma.marshall@instinctif.com
0207 457 1403

Scape Group: 0115 958 3200

Matt Carrington-Moore
Chief Marketing Officer
mattcm@scapegroup.co.uk



2nd Floor, City Gate West, Tollhouse Hill,
Nottingham, NG1 5AT

+44 (0)115 958 3200
general@scapegroup.co.uk

scapegroup.co.uk

 **@Scape_Group**  **/scape_group**